

# COLOR CHART

## IMPRESSIONS<sup>®</sup> Coating System

### BENEFITS

Impressions coatings provide several unique benefits including:

- Superior scratch resistance
- Exceptional resistance to sun, rain and other natural elements
- Exceptional dirt and stain resistance

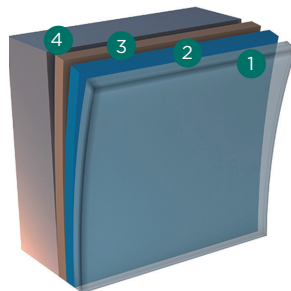
### SUBSTRATES

Impressions coatings can be applied to several substrates: Hot-Dip Galvanized (HDG), Galvalume<sup>®</sup> and Aluminum

### COLORS

Available in 12 standard print color patterns.

- 1 Protected with a 0.45 mil nominal PVDF Clear Top Coat with 70% Kynar 500<sup>®</sup>/Hylar 5000<sup>®</sup> resins
- 2 0.05 mil nominal fluoropolymer ink
- 3 0.65 mil nominal Color Base Coat
- 4 Substrate



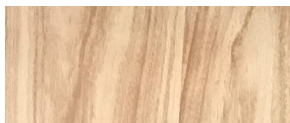
- Coating dry film thickness 1.1 mils nominal
- Gloss, maximum of 10 at 60° in accordance with ASTM D523
- Finish warranty - 20 years



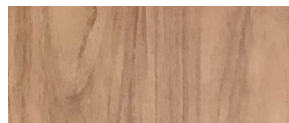
CENTRIA's Impressions coating system is a pre-finished decorative paint system that accurately simulates expensive natural finishes, including wood and specialty metals. Using high performance, field-proven print coating technology, this metal print coat finish system can be used on both steel and aluminum substrates, offering significant cost savings along with lower maintenance than the natural materials they emulate. Available in twelve print coat patterns and colors, the coating is low maintenance and offers exceptional dirt and stain resistance, along with excellent UV resistance. The outstanding overall adhesion and color consistency of Impressions coatings make for a uniform appearance over the life of a building.



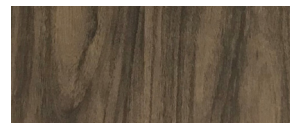
### COLOR PALETTE



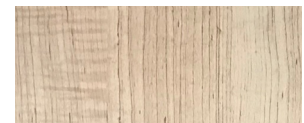
850 Light Oak



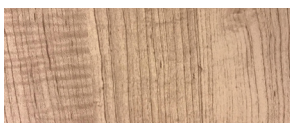
851 Medium Oak



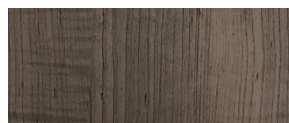
852 Dark Oak



853 Light Maple



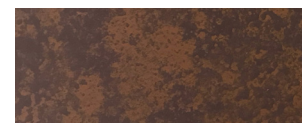
854 Medium Maple



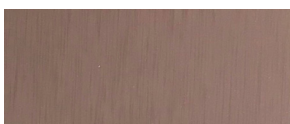
855 Dark Maple



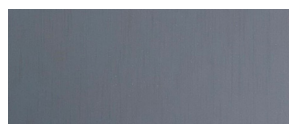
856 Copper Patina



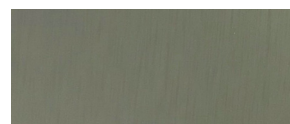
857 Rust



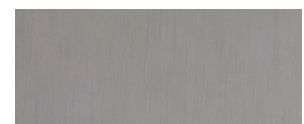
858 Red Zinc



859 Blue Zinc



860 Green Zinc



861 Crystal Zinc